

Galley® Line

Sanitary, Heavy Duty

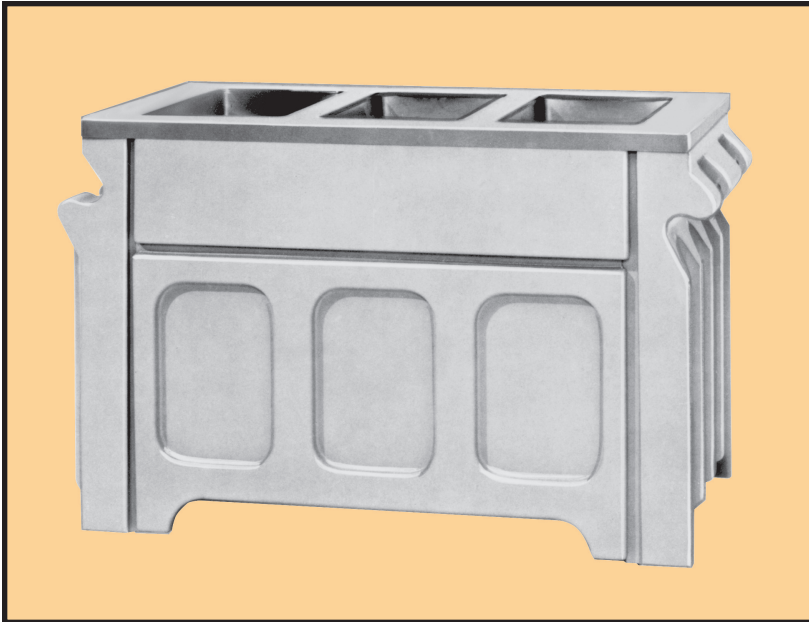
Self-Service

Hot Food Modules

Item No. _____

3 Well Model	4 Well Model	5 Well Model
9030	9040	9050
9031	9041	9051
9032	9042	9052
9033	9043	9053
9034	9044	9054

A1A11420



U.S. Patent No's. 4,013,880 and 4,008,931



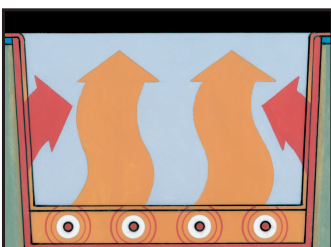
Hot Food Module – Attractively displays heated pans of food for cafeteria service. Select from three, four or five-well models for your specific serving requirements.

- Aesthetic design, three neutral colors, dove white, pewter tan and black pearl blends in with any surroundings.
- Four built-in & concealed stainless steel handles allow easy portability.
- Self-locking and self-aligning features eliminate time consuming hookup.
- Unique design of Food Wells provides heat concentration on the sides and the bottom too.
- Soft textured surfaces and rounded corners help prevent skin cuts and clothing snags.
- Casters and brakes are almost completely concealed from patron's view.



Hot Food Well

A newer Galley feature that should please the energy-conscious is Galley's standard, patented high efficiency hot food well. It uniquely heats from the sides as well as the bottom, and uses one-third to one-half the power of conventional hot food units...just one of many Galley exclusives.



Cat. No.	Module Size			Unit Electrical Ratings						Shp. Wt. Lbs.	Quantity of Decorator Panels Included
	W	D	H	Volts	Amps	Phase	Watts	Hz			
9030	50"	28"	36"	120	12.5	1	1500	60	235	3	
9031	50"	28"	36"	120/208	7.2	1	1500	60	235	3	
9032	50"	28"	36"	120/240	6.3	1	1500	60	235	3	
9033	50"	28"	36"	120/208	4.2	3	1500	60	235	3	
9034†	50"	28"	36"	120/240	3.6	3	1500	60	235	3	
9040	64 1/2"	28"	36"	120	16.7	1	2000	60	270	4	
9041	64 1/2"	28"	36"	120/208	9.6	1	2000	60	270	4	
9042	64 1/2"	28"	36"	120/240	8.3	1	2000	60	270	4	
9043	64 1/2"	28"	36"	120/208	8.3	3	2000	60	270	4	
9044†	64 1/2"	28"	36"	120/240	7.2	3	2000	60	270	4	
9050	79"	28"	36"	120	20.8	1	2500	60	330	5	
9051	79"	28"	36"	120/208	12.0	1	2500	60	330	5	
9052	79"	28"	36"	120/240	10.4	1	2500	60	330	5	
9053	79"	28"	36"	120/208	8.3	3	2500	60	330	5	
9054†	79"	28"	36"	120/240	7.2	3	2500	60	330	5	

† No Plug Configuration Available For Canada on Models 9034, 9044 and 9054.

Galley[®] Line Hot Food Modules

Model No's. 9030, 9031, 9032, 9033, 9034 3-Well Hot Food Module

Model No's. 9040, 9041, 9042, 9043, 9044 4-Well Hot Food Module

Model No's. 9050, 9051, 9052, 9053, 9054 5-Well Hot Food Module



To be **Galley[®] Line** Cafeteria Hot Well Unit, Model _____ with accessories as specified.

GENERAL: Unit to be self-contained, mobile cafeteria Hot Well module for heated foods. Body material to be one of three neutral base colors, dove white, pewter tan or black pearl. "Matelock" self-locking and aligning end panels allow modules to be interconnected. To have recessed push handles at each end. Removable side panel on customer's side to be recessed to accept decorator panels. Server side to be open to accept accessories. To be listed by Underwriters' Laboratories and The National Sanitation Foundation.

CONSTRUCTION: Body material to be of flame retardant ABS formed plastic fastened to a galvanized steel undercarriage. 14 ga. 300 series stainless steel top to have not less than No. 4 finish. To have a die-stamped openings with raised edges to accept a 4" deep x 12 x 12 pans. Dry hot food well (500W each) to be constructed to provide bottom and side heating to hold hot food at serving temperature. Each Hot food well to be individually controlled by means of an infinite switch. Plate mounted 4" diameter swivel casters with toe brakes to be provided. Power supply cord to be 6 feet in length.

ELECTRICAL RATING: Unit specified to be rated at: _____ volts AC, _____ watts, _____ phase, _____ amps, _____ Hz. Cord to have NEMA _____ plug configuration.

ELECTRICAL SUPPLY INFORMATION

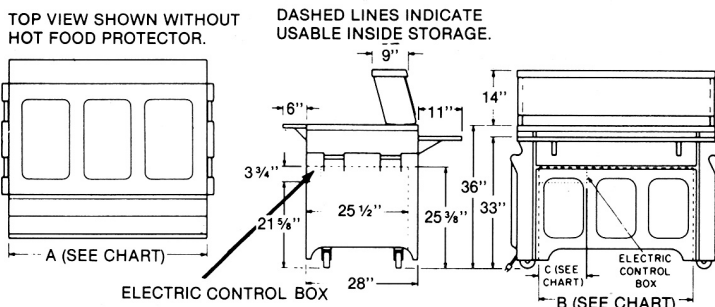
Model	Supply Cord/ No. Conductors	NEMA Plug Configuration	Branch Circuit Rating	
9030	12/3	L5-30P	30A	1Pole
9031	14/4	L14-20P	20A	2Pole
9032	14/4	L14-20P	20A	2Pole
9033	14/5	L21-20P	20A	3Pole
9034†	14/5	L21-20P	20A	3Pole
9040	10/3	L5-30P	30A	1Pole
9041	14/4	L14-20P	20A	2Pole
9042	14/4	L14-20P	20A	2Pole
9043	14/5	L21-20P	20A	3Pole
9044†	14/5	L21-20P	20A	3Pole
9050	10/3	L5-50P	50A	1Pole
9051	14/4	L14-20P	20A	2Pole
9052	14/4	L14-20P	20A	2Pole
9053	14/5	L21-20P	20A	3Pole
9054†	14/5	L21-20P	20A	3Pole

† No Plug Configuration Available For Canada on Models 9034, 9044 and 9054.

SPECIFICATION DRAWING OF BASIC UNIT WITH HOT FOOD PROTECTOR, FOLDING TRAYSIDE AND FOLDING CUTTING BOARD ACCESSORIES

Cat. Series	Dim 'A'	Dim 'B'	Dim 'C'
9030	50" - 3-well	39"	7 1/2"
9040	64 1/2" - 4-well	54"	14 3/4"
9050	79" - 5-well	68"	14 3/4"

NOTE: If unit is to be used independently, add 4" to width for clearance on all specifications. Add 3/2" to depth for folded trayside and 3/4" for folded cutting board.



ACCESSORIES:

A. Decorator panels, specify catalog number and quantity. (See chart on front side.)

- Catalog No. 8700 American Walnut, Quantity _____ Included.
- Catalog No. 8701 Teakwood, Quantity _____.
- Catalog No. 8702 Plain Custom Panels, Quantity _____.

B. Food Pan Adapters, specify quantity.

- Catalog No. 8750 Hot Well Adapter for use with 6" deep 12 x 20 pans Quantity _____.

C. Folding Trayslides. All stainless steel with die-stamped three-rib reinforcement.

- Catalog No. 8773, (*Short 50") 42 7/8" width, used on 9030 series.
- Catalog No. 8774, 50" width, used on 9030 series.
- Catalog No. 8775, (*Short 64 1/2") 57 3/8" width, used on 9040 series.
- Catalog No. 8776, 64 1/2" width, used on 9040 series.
- Catalog No. 8777, (*Short 79") 77 7/8" width, used on 9050 series.
- Catalog No. 8778, 79" width, used on 9050 series.

***Note:** A "Short Trayslide" must be used on the first module to the right of corner In-Fill Module for inside turns.

D. Hot Food Protector with plastic shelf, breathguard and stainless steel upright supports. 14" high field mounted.

- Catalog No. 8780, 50" width, used on 9030 series. Unlighted.
- Catalog No. 8791, 50" width, used on 9030 series. Lighted. UL listed.
- Catalog No. 8781, 64 1/2" width, used on 9040 series. Unlighted.
- Catalog No. 8792, 64 1/2" width, used on 9040 series. Lighted. UL listed.
- Catalog No. 8782, 79" width, used on 9050 series. Unlighted.
- Catalog No. 8793, 79" width, used on 9050 series. Lighted. UL listed.

E. Folding Cutting Board. All plastic. Mounted flush on server's side.

- Catalog No. 8763, 50" width, used on 9030 series.
- Catalog No. 8764, 64 1/2" width, used on 9040 series.
- Catalog No. 8765, 79" width, used on 9050 series.

F. Extension Shelf. Stainless steel. Mounted flush with top of module. Self-mounting. 16" wide x 28" deep.

- Catalog No. 8754 (Not for use with item I or N).

G. Undercounter Shelving System. Maximum: two per unit. All stainless steel. Removable 18" depth with 1" front edge.

- Catalog No. 8757 4 1/2" width, used on 9030 series.
- Catalog No. 8758 5 1/8" width, used on 9040 series.
- Catalog No. 8759 7 1/2" width, used on 9050 series.

H. Utility Drawer. Stainless steel. Has lock and removable liner. Outside dimensions: 2 1/4"W x 23"D x 7 1/4"H. Mounted on server's side.

- Catalog No. 8760.

I. "Matel Flat" Panel. (Makes any Galley unit compatible with any other serving line equipment or for squaring unit to wall.) Size: 5 3/8"W x 28"D x 36"H.

- Catalog No. 8761 Male Panel (fits female end).
- Catalog No. 8762 Female Panel (fits male end).

J. Buffet Style Canopy.

- Catalog No. 8740 use with 50" unit. UL listed.
- Catalog No. 8741 use with 64 1/2" unit. UL listed.
- Catalog No. 8742 use with 79" unit. UL listed.

K. Low End Shelf.

- Catalog No. 8725 (Not for use with item I or N).

L. Buffet Style Canopy with Heat Lamps.

- Catalog No. 8743 use with 50" unit. UL listed.
- Catalog No. 8744 use with 64 1/2" unit. UL listed.
- Catalog No. 8745 use with 79" unit. UL listed.

M. Close Off For Server's Side.

- Catalog No. 8734 use with 50" unit. UL listed.
- Catalog No. 8735 use with 64 1/2" unit. UL listed.
- Catalog No. 8736 use with 79" unit. UL listed.

N. Flat End Panels. (Makes any Galley unit compatible with any other serving line equipment or for squaring unit to wall).

- Catalog No. 8731 Replaces Female "matelock".
- Catalog No. 8732 Replaces Male "matelock".

O. ELECTRICAL OUTLETS (Not UL Listed).

- Catalog No. 8696 Tombstone, Top Mounted, Duplex, 125V, 15 AMP.
- Catalog No. 8697 Operator Side, Under Top Skirt, Duplex, 120V, 16 AMP.
- Catalog No. 8698 Operator Side, Under Top Skirt, Duplex, 120V, 15 AMP.
- Catalog No. 8699 Operator Side, Under Top Skirt, Duplex, 120V, 15 AMP.

NOTE: #8696 and #8697 are part of the module wiring. #8698 and #8699 have separate cord set.